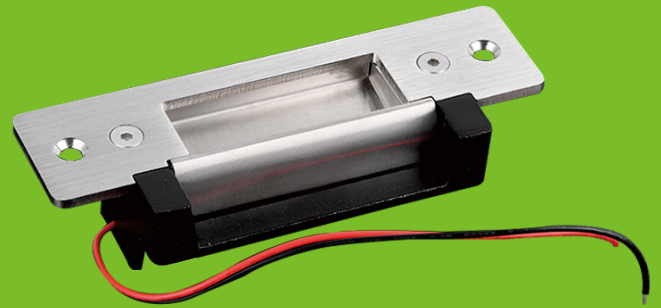


# Embedded 12V Electric Strike Lock



ES-121

## Specifications

<b>Operating Voltage</b>	DC12V (24V optional)
<b>Working current</b>	240mA
<b>Unlock method</b>	Self-adjustable power-on unlock or power-off unlock
<b>Withstand thrust</b>	400kg
<b>Material technology</b>	Zinc alloy high-temperature baking paint lock body, stainless steel Polished and brushed panel
<b>Proper temperature</b>	-10~+55°C
<b>Opening direction</b>	Regardless of left-handed/right-handed door
<b>product weight</b>	0.4kg

## Dimensions

